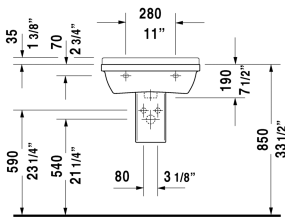
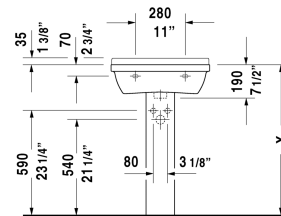
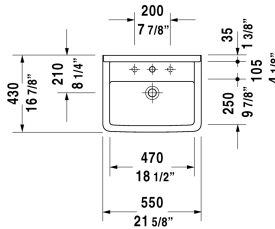


**Starck 3 Washbasin # 0300550000 / 0300550030**

**< 21 5/8" Inch >**



Washbasin	Dimension	Weight	Order number
with overflow, with faucet deck, underside fully glazed, hardware included, wall-mounted, cUPC® listed*, 21 5/8" Inch			
<b>Colors</b>			
00 White			
<b>Variant</b>			
●	21 5/8" x 16 7/8" Inch	32.8 lb	0300550000
●●●	21 5/8" x 16 7/8" Inch	32.8 lb	0300550030
<b>Infobox</b>			
* Complies with following standards: ASME A112.19.2/CSA B45.1, Washbasin is not ADA compliant in combination with pedestal, siphon cover or metal console			
Sanitary ceramics with the special WonderGliss surface finish will remain clean and attractive-looking for a long time to come. When ordering WonderGliss please add a "1" as eleventh digit to the model number.			
<b>Suitable products</b>			
Pedestal for # 030065, 030060, 030055, 030410, 030480, 030470, 033213, 030760, 030750, 28" x 8 1/4" Inch	28" x 8 1/4" Inch		086516
Siphon cover for # 030065, 030060, 030055, 030410, 030480, 030470, 033213, 030760, 030750, 6 3/4" x 11 1/4" Inch	6 3/4" x 11 1/4" Inch		086515

All drawings contain the necessary measurements which are subject to standard tolerances. They are stated in inch & mm and are non-binding. Exact measurements, in particular for customized installation scenarios, can only be taken from the finished ceramic piece.